

iTAC

The iTAC provides precise and timely Situation Awareness (SA) in a wireless, hand-held device using commercial communications services.



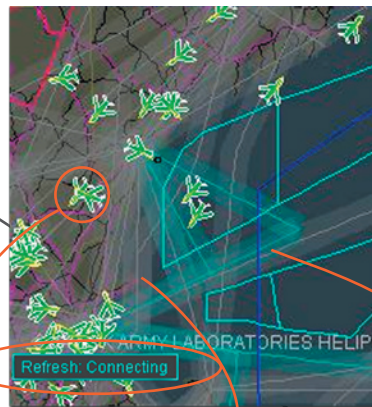
The iTAC is an extensible Web service hosted on a Personal Digital Assistant (PDA) that can display commercial and military air traffic and weather data in near real time (within seconds of update). With high resolution geographic and landmark features including terrain, cities, geopolitical boundaries, and airports, the iTAC provides a lightweight and portable way to gather time-sensitive information about an event or flight of interest. Imagery, weather, flight corridors, special use regions, roads, and grids are all available in customized views that can be saved and recalled between user sessions.

iTAC Navigation

Zoom to a region and monitor an event as it happens in near real time with the iTAC.



Single Integrated Picture



Geographic and Political Information
 Status Messages/ Help Text
 Commercial Aircraft
 Air Traffic Routes

To select a track:

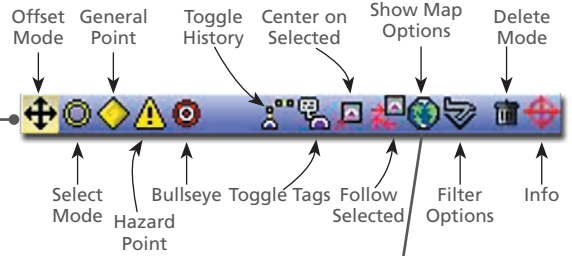
1. Tap Select Mode.
2. Tap the desired track.
3. View the information for that specific track.

CS:	USA933
From/To:	PVD -> PHL
Lat:	40:34:58.80 N
Lon:	072:27:00.01 W
Alt:	23,100 ft
Vel:	247 ° M / 418 kt

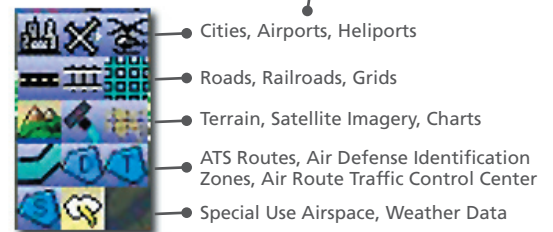
Web Browser Navigation



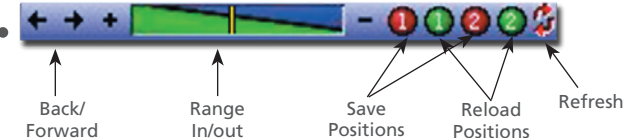
Control Bar



Map Options Toggle



Location Bar



The iTAC is typically configured with a wireless air card, VPN software, and a web browser. The device supports both digital cell service and 802.11 (WiFi) protocols.

iTAC Features

- Provides real-time access to vehicle and sensor data (aircraft, ships, ground transport, etc.)
- Supports DOD “Common-Look-and-Feel” initiatives
- Completely scalable and portable
- High resolution maps, imagery and feature sets
- NEXRAD weather
- Inherently multi-level secure and GPS enabled
- Blue force and emergency relief locations
- Open architecture easily adaptable to different missions and requirements
- Proven technology deployed in support of Homeland Defense missions

iTAC Data and Display

The iTAC supports all Raytheon Solipsys Multi-Source Correlator Tracker (MSCT) and Tactical Component Network (TCN) sensor and data feeds. It also supports the same common look-and-feel available in the Raytheon Solipsys Tactical Display Framework (TDF) display suite.

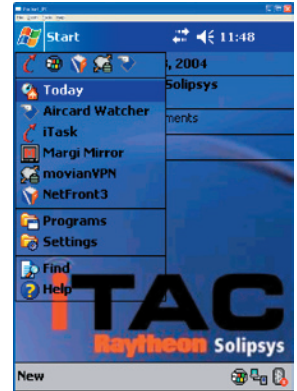


iTAC Support

itac-support@solipsys.com

Copyright © 2004 Raytheon Solipsys. All rights reserved. Audivox PocketPC, HP, AT&T, iPAQ and Verizon are all registered trademarks of their respective holders. Printed in the USA.

iTAC Start Menu



- Unique design approach and implementation provides unlimited flexibility to meet diverse mission and customer needs
- Hardware-independent architecture scalable to a virtually unlimited set of client applications
- Optimized for low-bandwidth connections
- Supports the precise display of thousands of track and sensor objects in near real time
- Simultaneous voice and data interaction

The iTAC dynamically and securely downloads all application software at system startup over encrypted VPN connections; for that reason no Raytheon Solipsys software needs to be installed or maintained on the local PDA device.

Raytheon Solipsys
Integrated Defense Systems
Product Sales
 6100 Chevy Chase Drive
 Laurel, MD 20707
 240.568.8100
 sales@solipsys.com
 www.solipsys.com

Raytheon Solipsys
 Customer Success Is Our Mission